

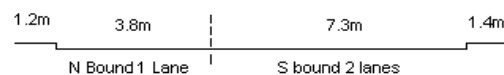
YEAR 2013

COVERAGE (B) STATION 2407

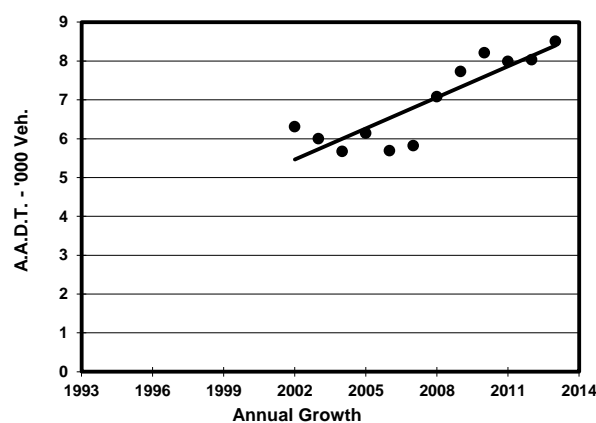
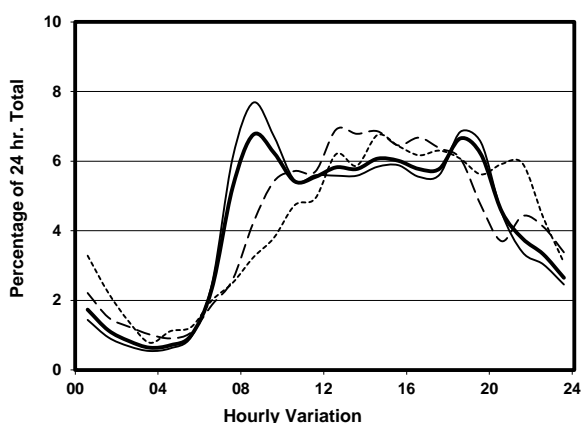
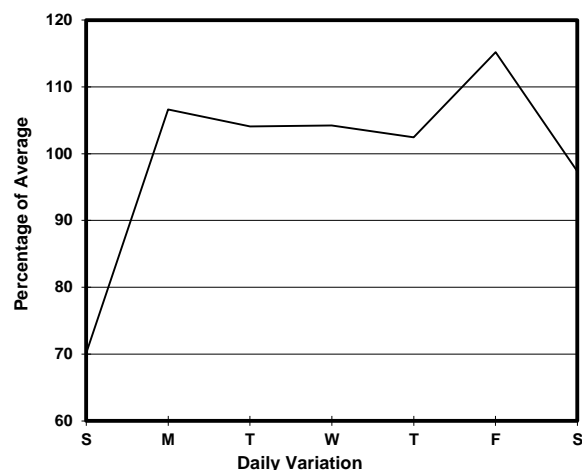
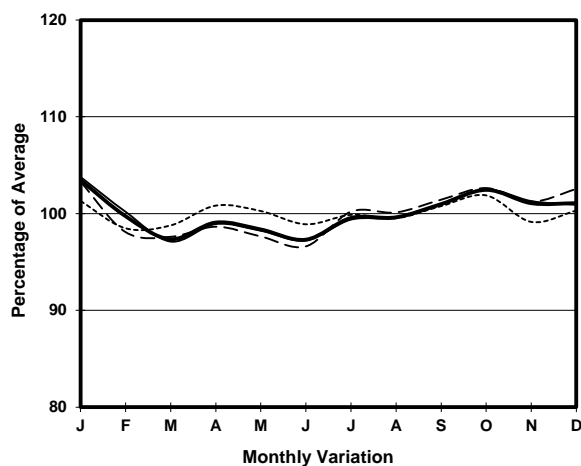
ROAD NETWORK MINOR

ROAD TYPE DISTRICT DISTRIBUTOR

LINK SMITHFIELD RD (from POK FU LAM RD to LUNG WAH ST)



## 1. TRAFFIC FLOW VARIATION AND GROWTH



## 2. TRAFFIC CHARACTERISTICS (BY DIRECTION)

Parameter	All - Day	Mon. - Fri.	Sat.	Sun.
<b>SOUTH BOUND</b>				
A.A.D.T.	6860	7490	6710	4690
R 12 / 24 - %	71.6	72.9	70.5	63.3
R 16 / 24 - %	89.4	90.3	87.2	84.9
AM Peak Hour	0800-0900	0800-0900	0900-1000	0900-1000
One-way flow at AM peak hour	460	560	370	160
T - % (AM)	-	6.4	-	-
PM Peak Hour	1800-1900	1800-1900	1600-1700	1700-1800
One-way flow at PM peak hour	470	540	450	300
T - % (PM)	-	3.4	-	-
Prop.of commercial vehicles - 16 hr.	-	4.8	-	-
<b>NORTH BOUND</b>				
A.A.D.T.	1650	1720	1710	1370
R 12 / 24 - %	69	70.3	67.2	62
R 16 / 24 - %	87.4	88.1	84.9	84.9
AM Peak Hour	0800-0900	0800-0900	0900-1000	0900-1000
One-way flow at AM peak hour	120	140	90	70
T - % (AM)	-	6.7	-	-
PM Peak Hour	1800-1900	1800-1900	1600-1700	1800-1900
One-way flow at PM peak hour	90	100	110	100
T - % (PM)	-	8.4	-	-
Prop.of commercial vehicles - 16 hr.	-	7.2	-	-

## 3. OTHER INFORMATION AND COMMENT

**4. Vehicle classification and occupancy - Monday to Friday**

Time		Class of vehicle									
		Motor	Private	Taxi	Private	PLB	Goods veh.		Non	Fr. Bus	
		Cycle	Car		LB		Light	M & H	Fr. Bus	SD	DD
0700-0800	Pro	5.3	24.5	43.6	1.1	3.2	12.8	1.1	7.4	1.1	0.0
	Ocp	1.2	1.2	2.0	1.0	12.0	1.4	1.0	10.4	23.3	0.0
0800-0900 Peak hour	Pro	5.8	50.7	22.2	4.8	0.0	10.0	2.1	3.7	0.7	0.0
	Ocp	1.1	1.2	1.9	2.7	0.0	1.7	1.0	15.4	17.6	0.0
0900-1000	Pro	2.5	49.7	19.6	1.8	1.8	17.8	2.5	3.7	0.6	0.0
	Ocp	1.0	1.5	1.8	5.0	3.7	1.6	1.0	6.0	12.8	0.0
1000-1100	Pro	2.1	38.1	22.2	1.4	0.0	29.1	4.2	2.1	0.9	0.0
	Ocp	1.0	1.5	2.5	1.5	0.0	1.5	1.7	5.7	9.6	0.0
1100-1200	Pro	4.1	42.1	19.0	5.8	0.0	24.7	1.7	1.7	1.0	0.0
	Ocp	1.0	1.6	2.1	3.7	0.0	1.8	2.5	1.0	10.0	0.0
1200-1300	Pro	2.7	38.6	23.3	4.5	2.7	23.3	3.6	0.0	1.3	0.0
	Ocp	1.0	1.3	2.4	3.4	1.3	1.7	1.8	0.0	9.3	0.0
1300-1400	Pro	1.6	30.0	33.2	2.4	1.6	27.5	2.4	0.0	1.2	0.0
	Ocp	1.0	1.2	2.1	2.0	9.0	1.6	2.0	0.0	10.5	0.0
1400-1500	Pro	2.5	40.2	19.2	0.8	2.5	28.5	2.5	2.5	1.3	0.0
	Ocp	1.0	1.4	2.2	4.0	4.7	1.7	2.3	1.3	8.0	0.0
1500-1600	Pro	0.7	46.5	23.6	2.1	1.4	18.6	5.0	0.7	1.3	0.0
	Ocp	1.0	1.4	2.0	1.3	7.5	1.5	1.1	10.0	8.1	0.0
1600-1700	Pro	3.9	51.3	24.2	1.0	0.0	12.6	2.9	2.9	1.2	0.0
	Ocp	1.5	1.7	1.7	1.0	0.0	1.6	1.3	1.0	7.2	0.0
1700-1800	Pro	3.9	47.3	26.1	1.9	1.9	15.5	1.0	1.0	1.5	0.0
	Ocp	1.0	1.3	2.2	2.0	1.0	1.5	1.0	5.0	12.3	0.0
1800-1900	Pro	6.1	54.8	29.7	0.0	2.3	3.0	1.5	1.5	1.1	0.0
	Ocp	1.1	1.6	2.3	0.0	6.3	1.5	1.5	10.5	15.8	0.0
1900-2000	Pro	1.4	61.4	26.1	0.0	0.7	8.5	0.0	0.7	1.2	0.0
	Ocp	1.5	1.4	2.2	0.0	1.0	1.5	0.0	1.0	10.7	0.0
2000-2100	Pro	1.0	61.6	27.4	0.0	4.9	2.0	0.0	2.0	1.2	0.0
	Ocp	1.0	1.5	2.3	0.0	6.4	2.0	0.0	1.0	8.4	0.0
2100-2200	Pro	0.0	51.9	40.5	0.0	1.3	2.5	1.3	1.3	1.3	0.0
	Ocp	0.0	1.7	2.2	0.0	1.0	2.5	3.0	2.0	3.8	0.0
2200-2300	Pro	2.9	60.0	31.4	0.0	1.4	1.4	0.0	1.4	1.4	0.0
	Ocp	1.0	1.6	2.0	0.0	1.0	2.0	0.0	2.0	5.5	0.0
16 hours	Pro	3.0	46.8	26.0	1.9	1.5	15.6	2.1	2.1	1.1	0.0
	Ocp	1.1	1.4	2.1	2.8	5.3	1.6	1.5	7.2	10.7	0.0

**Legend**

**Pro.** Proportion of vehicles in % (Sum may not add up to 100% due to figure rounding)  
**Ocp.** Average occupancy of vehicles  
**M&H** Medium and Heavy